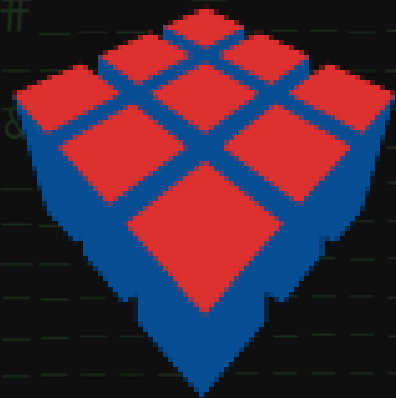
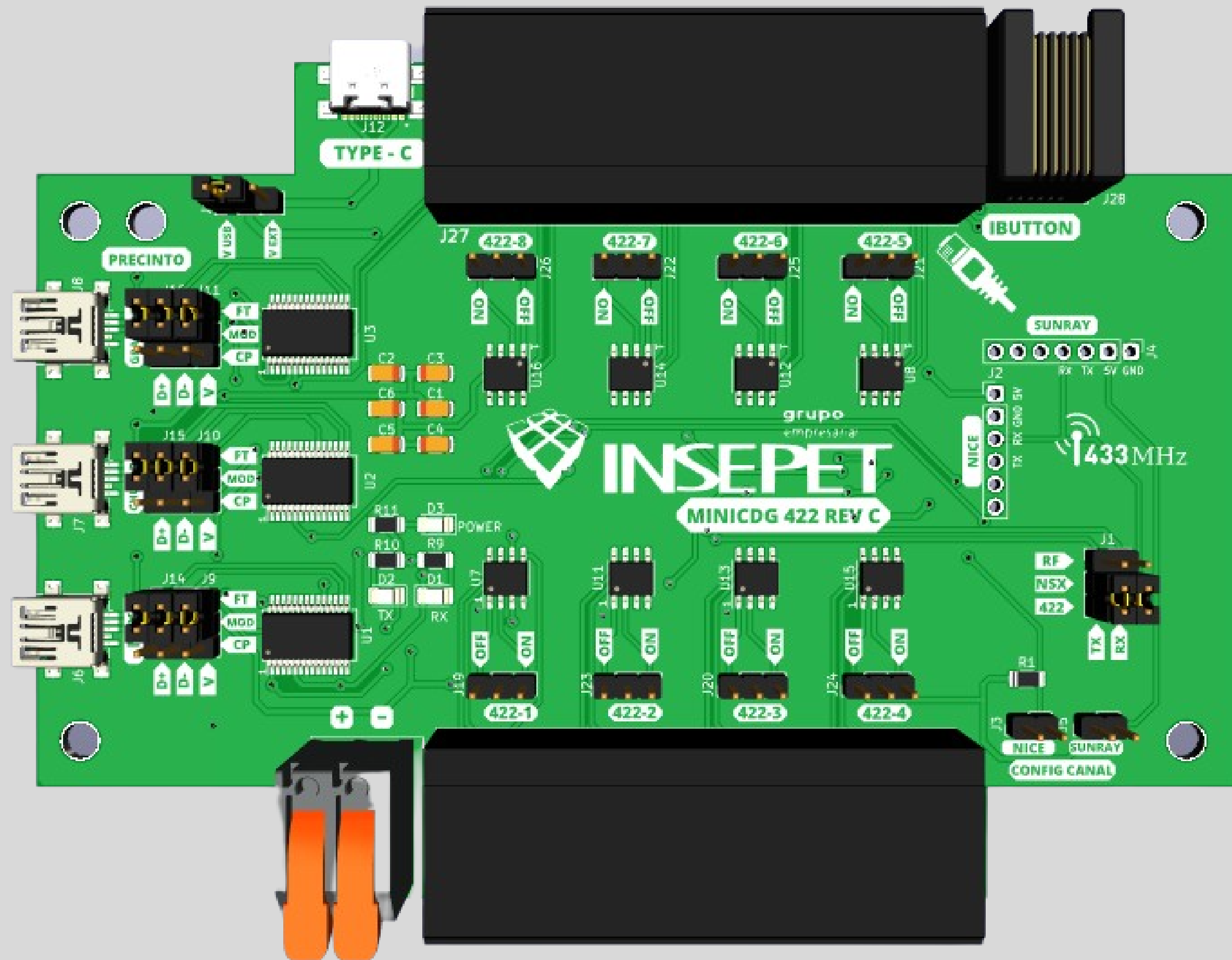


# MINICDG 422



grupo  
empresarial

# INSEPET



# ¿QUE FUNCION CUMPLE?

- **COMUNICACION SISTEMA (NSX-NSX2)**
- **CHUZADOR**
- **GRABADOR DE IBUTTON**



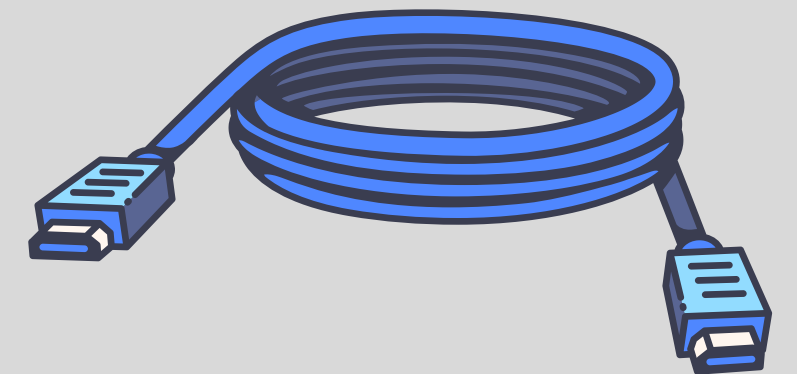
# INALAMBRICO

- Facilidad en instalacion
- Sin limite de receptores



# CABLEADO

- Fidelidad de comunicacion
- Mayor distancia de comunicacion

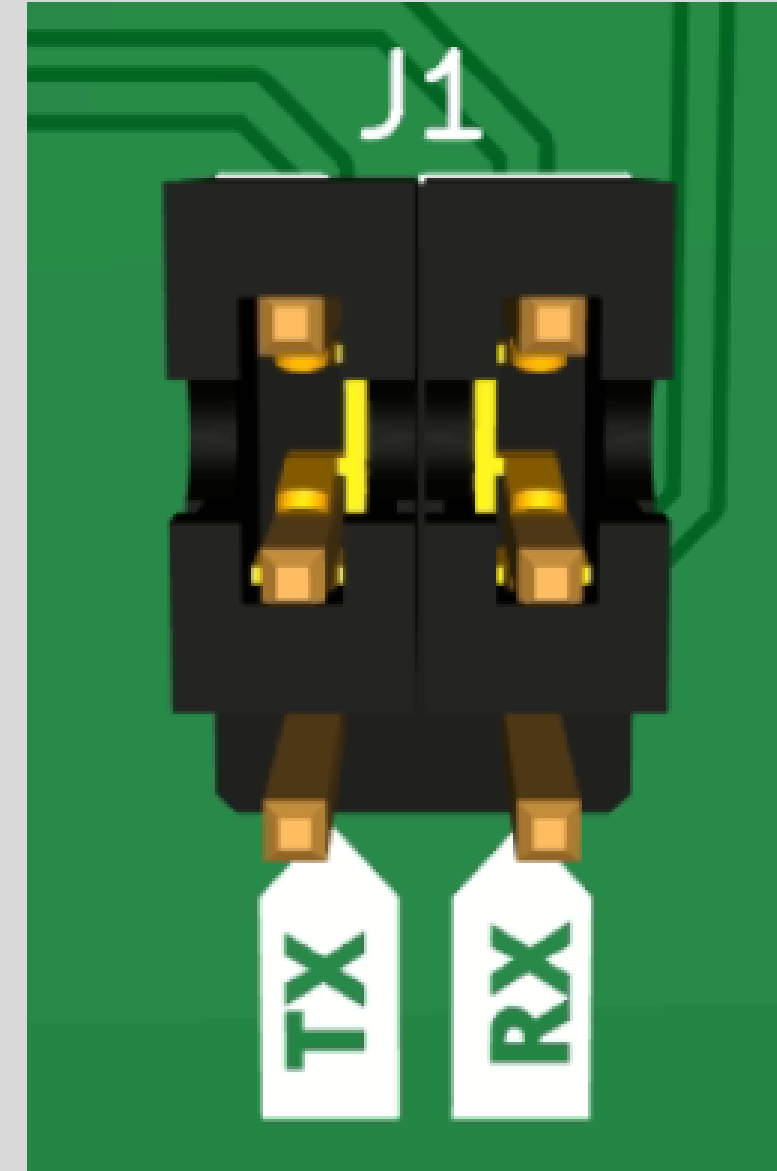


# CONFIGURACION

INALAMBRICO



CABLEADO



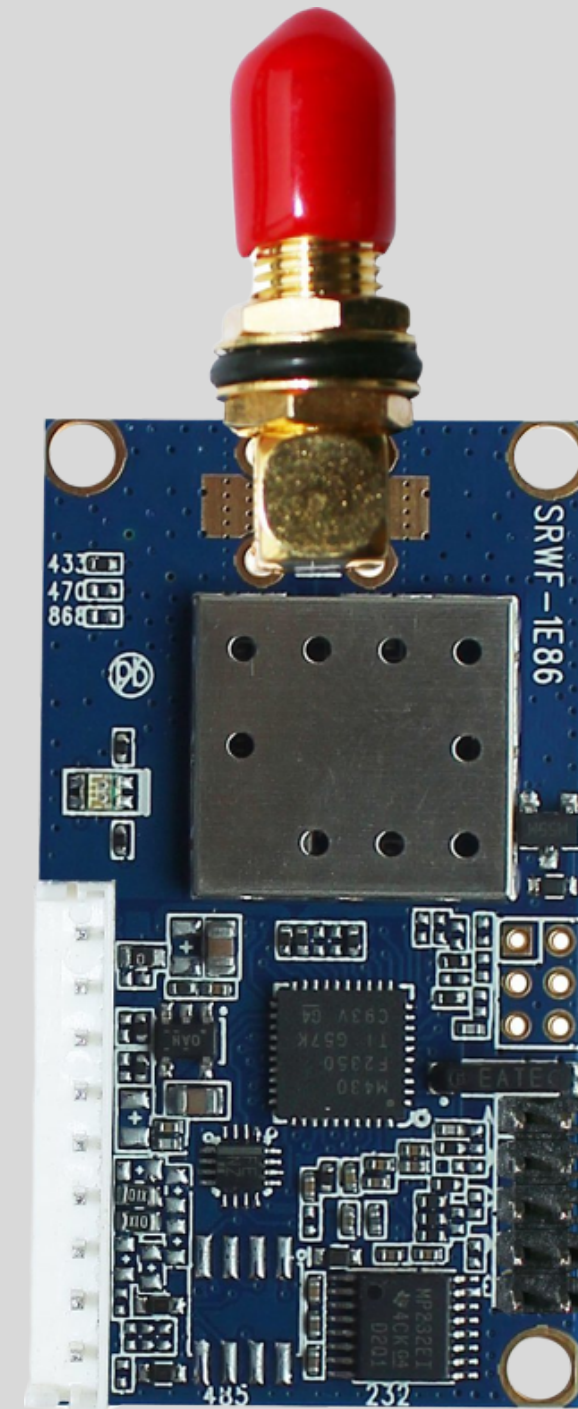
SELECCION  
APARTIR DE J1

# INALAMBRIKO

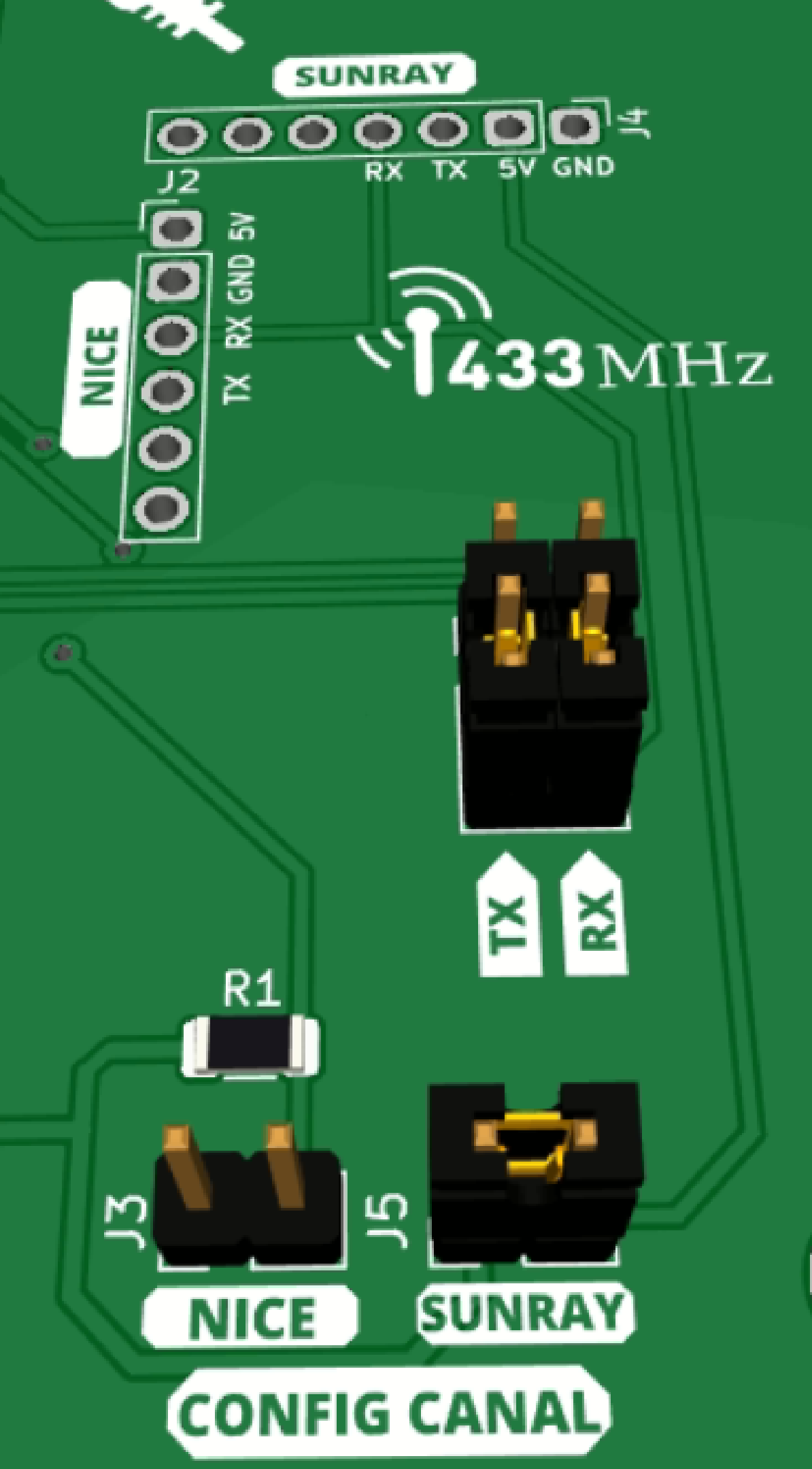


**NICE**

433 MHz



**SUNRAY**



# CONEXION MODULO RF

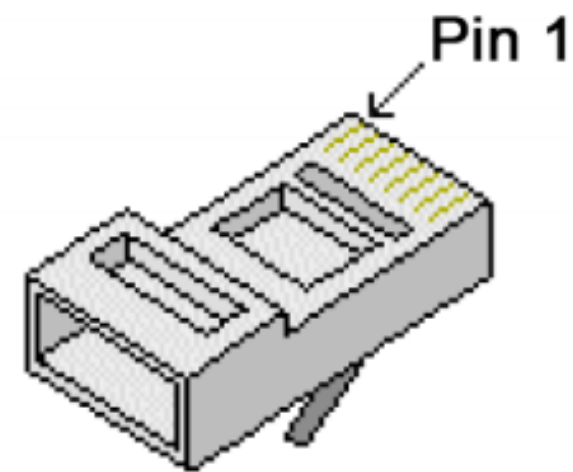
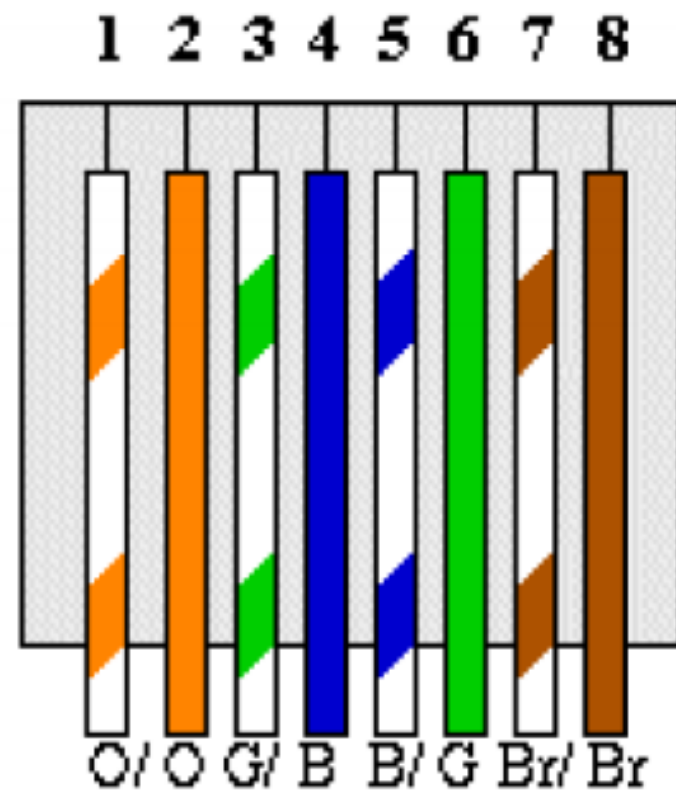
CONEXION 1 A 1 DE CABLES

# GRABAR CANAL

FACILIDAD PARA AMBOS MODULOS

# CABLEADO

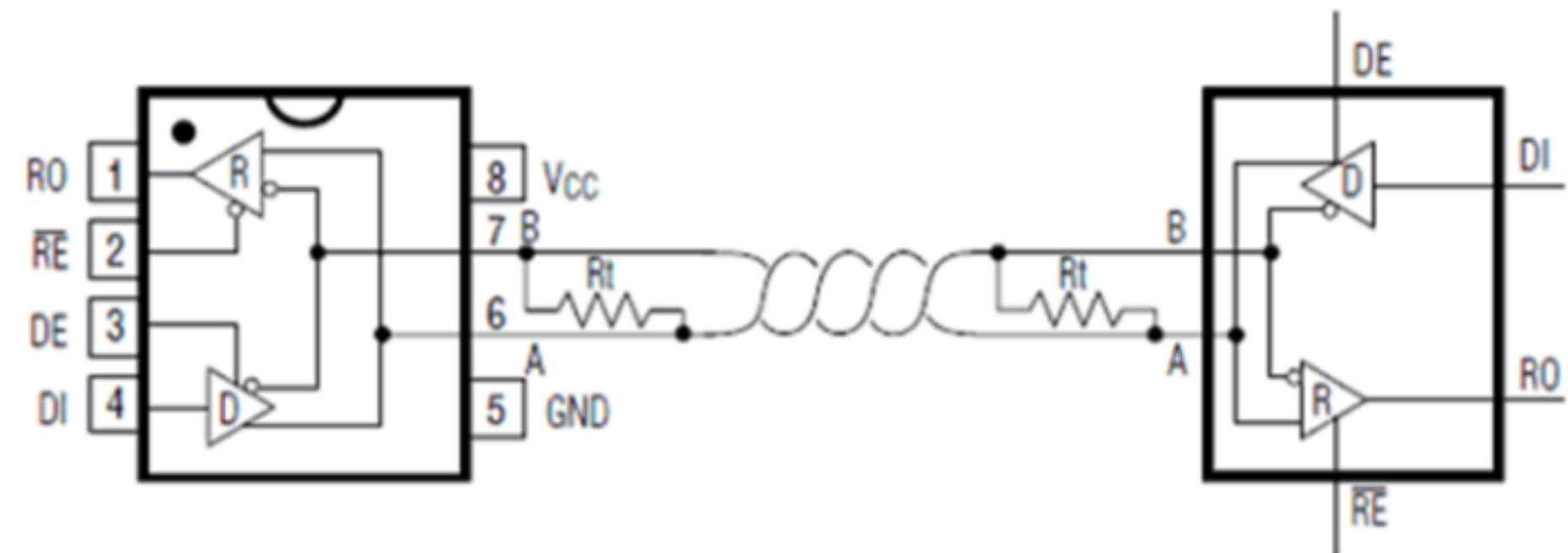
T-568B

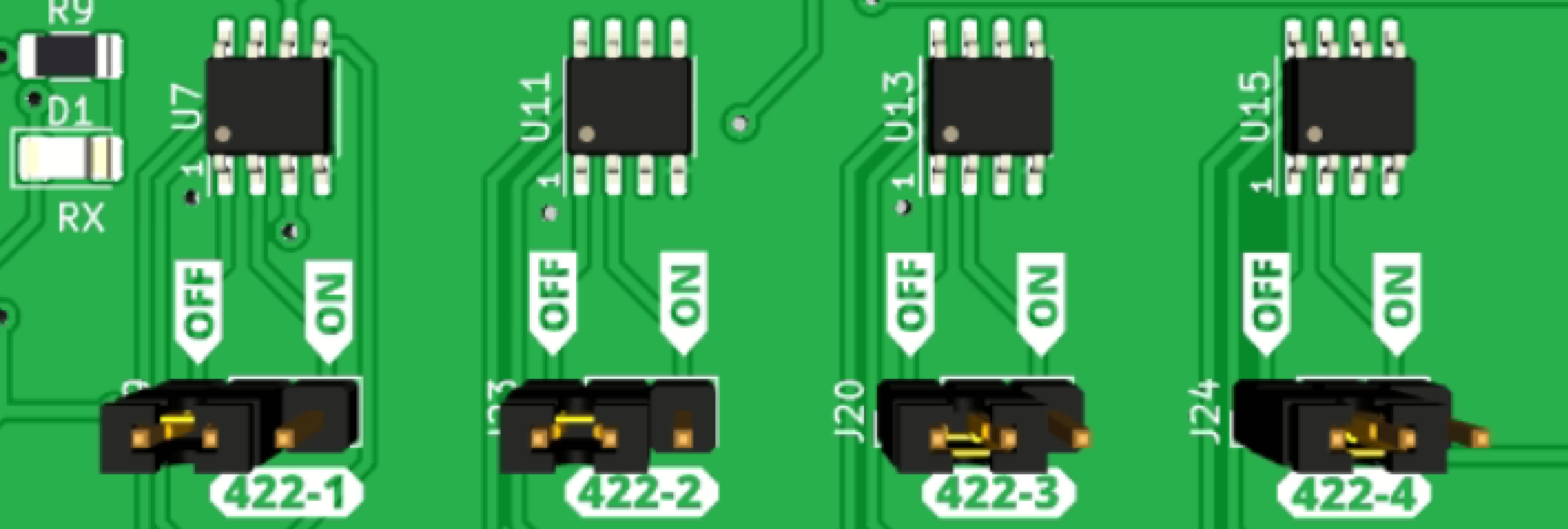


Puerto RJ 45

## RS422

SOLO USA 4 HILOS



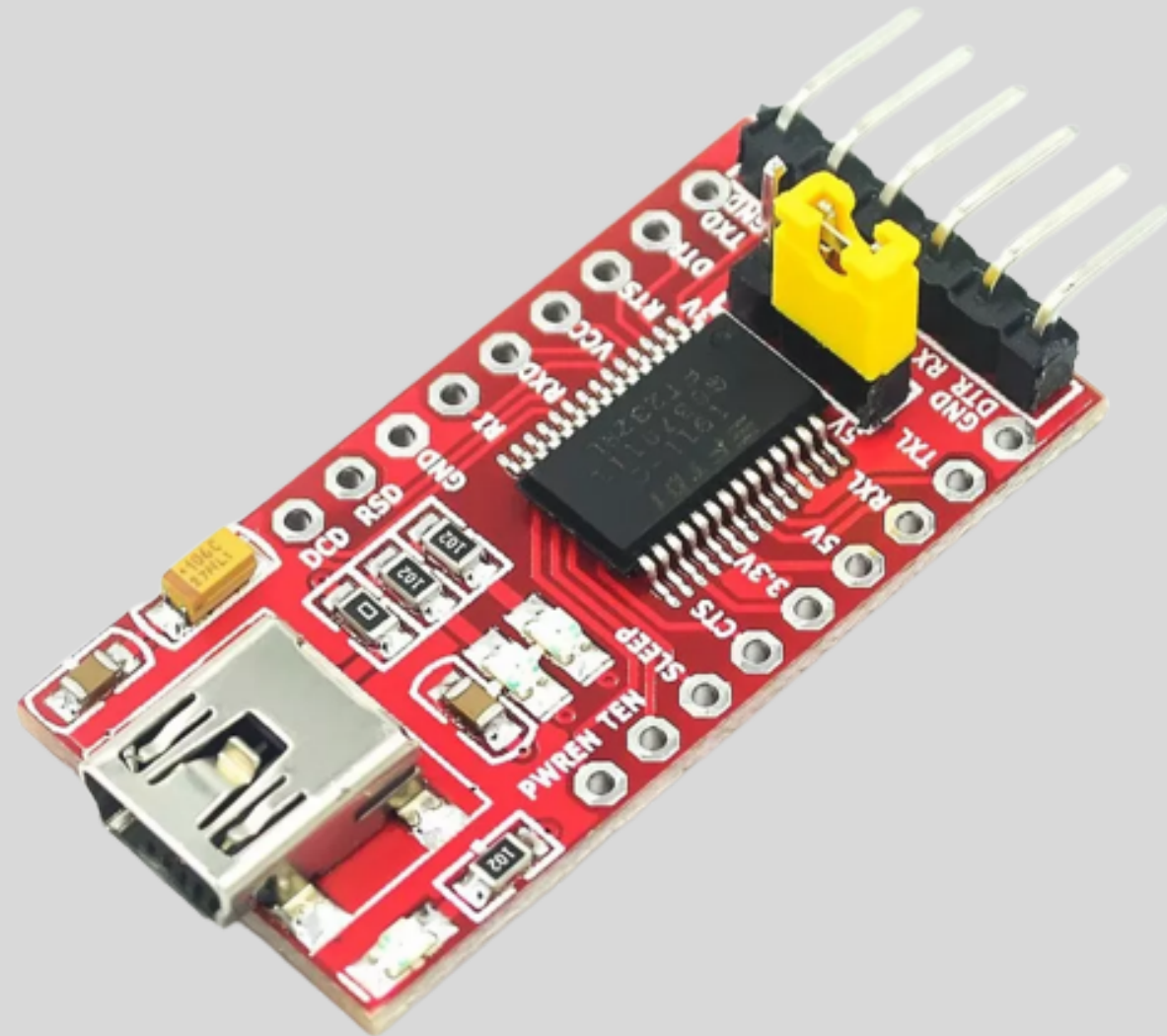


# HABILITACION DE PUERTOS

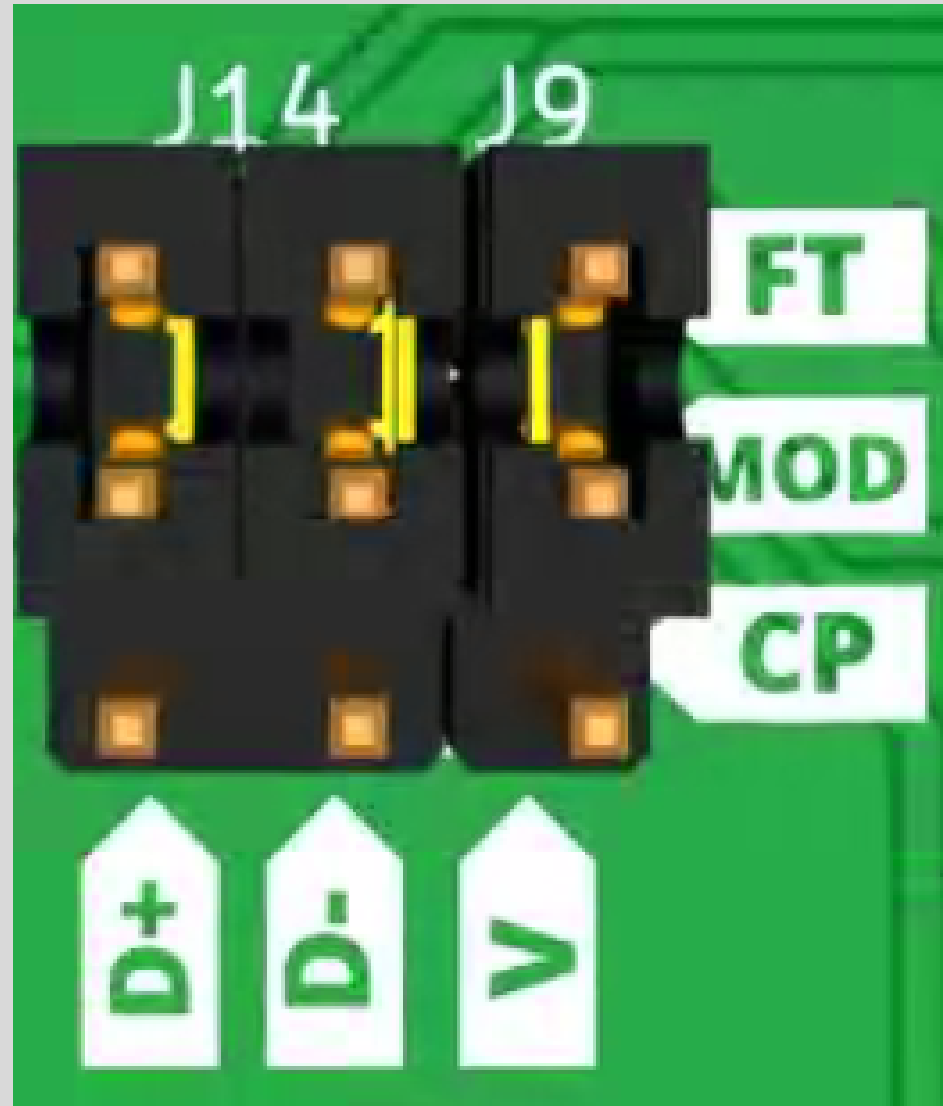
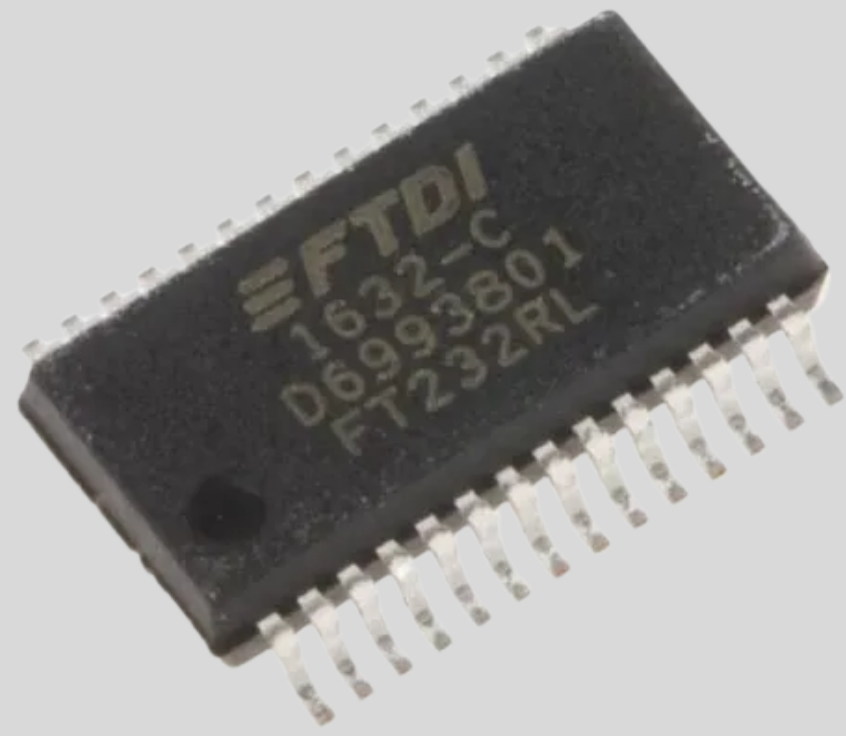
# COMUNICACION PC

Dos posibilidades de comunicación:

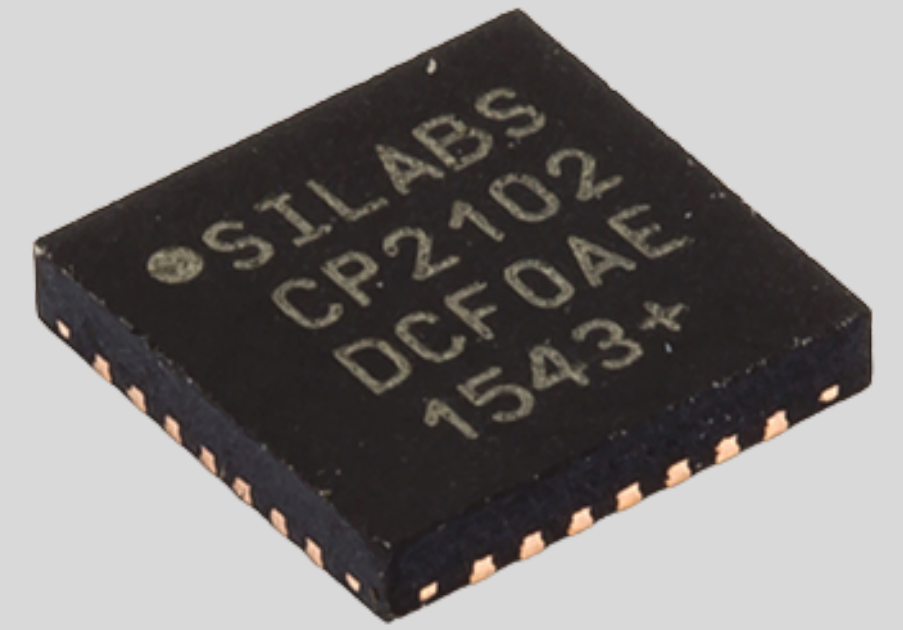
- CP2102
- FT232



FT232

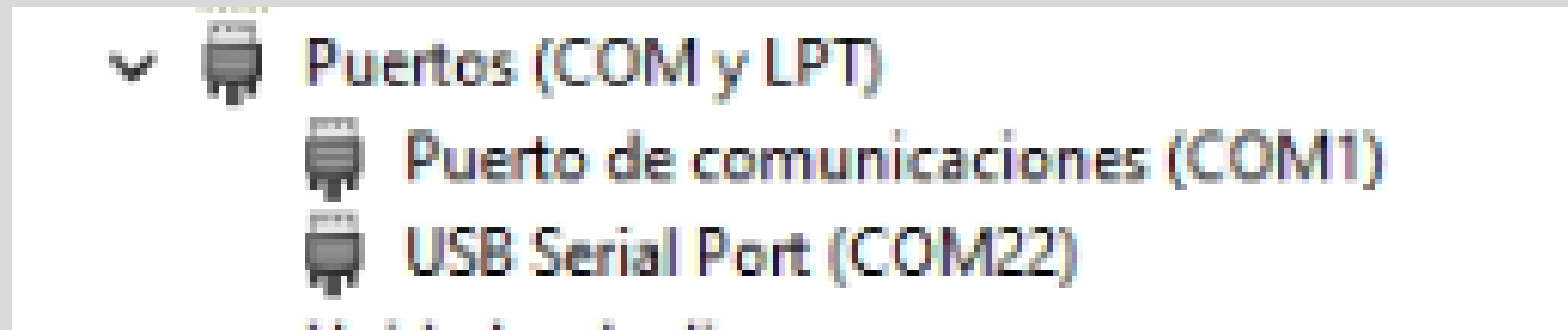


CP2102



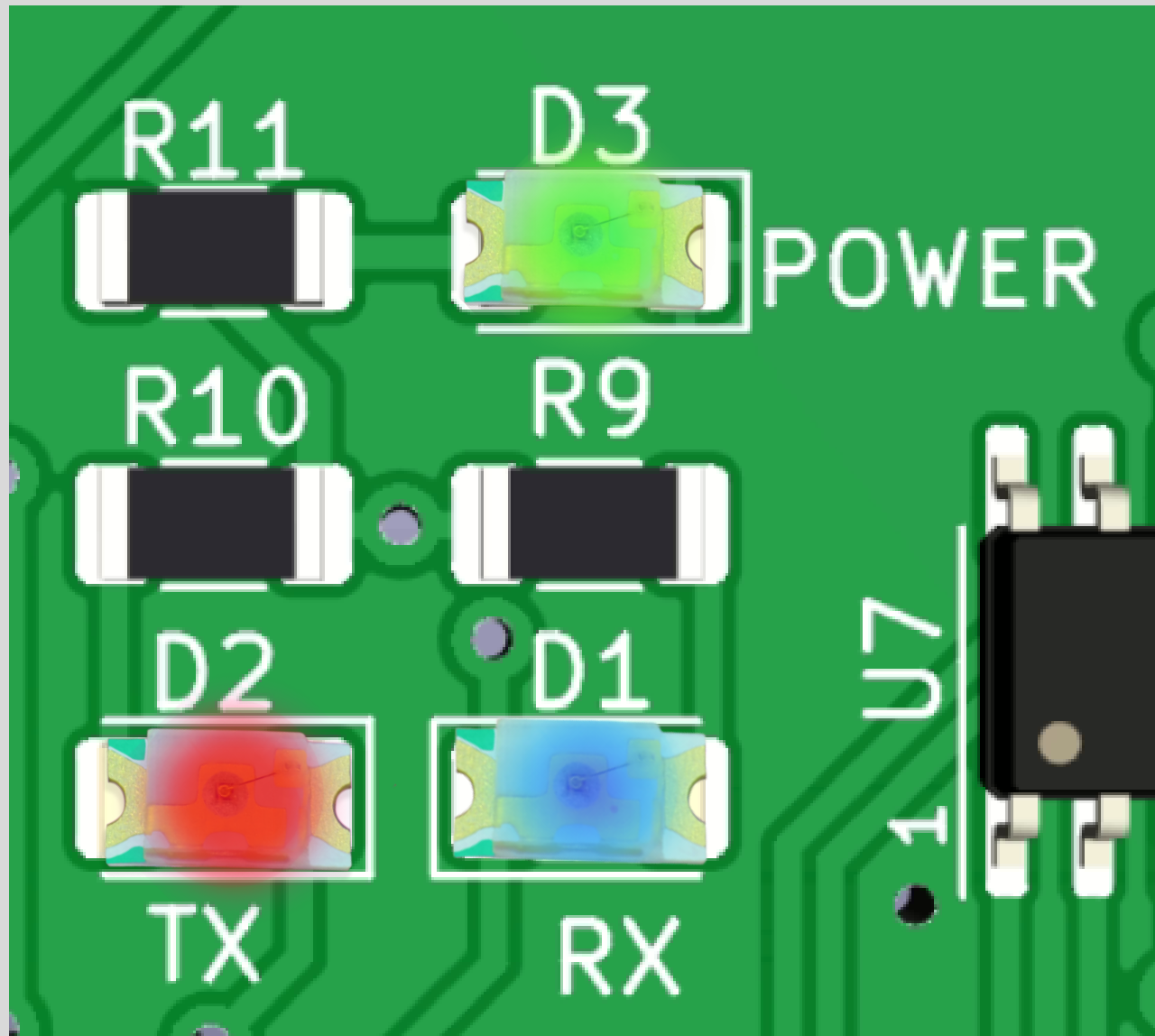
# ADMINISTRADOR DISPOSITIVOS

FT232



CP2102





*POWER*

MINICDG ENCENDIDA

*RX*

RECEPCION DE DATOS

*TX*

TRANSMISION DE DATOS

# CONFIGURACION IBUTTON

Comunicaciones ✕

Tipo comunicacion  ← →

Protocolo  ← →

Puerto